

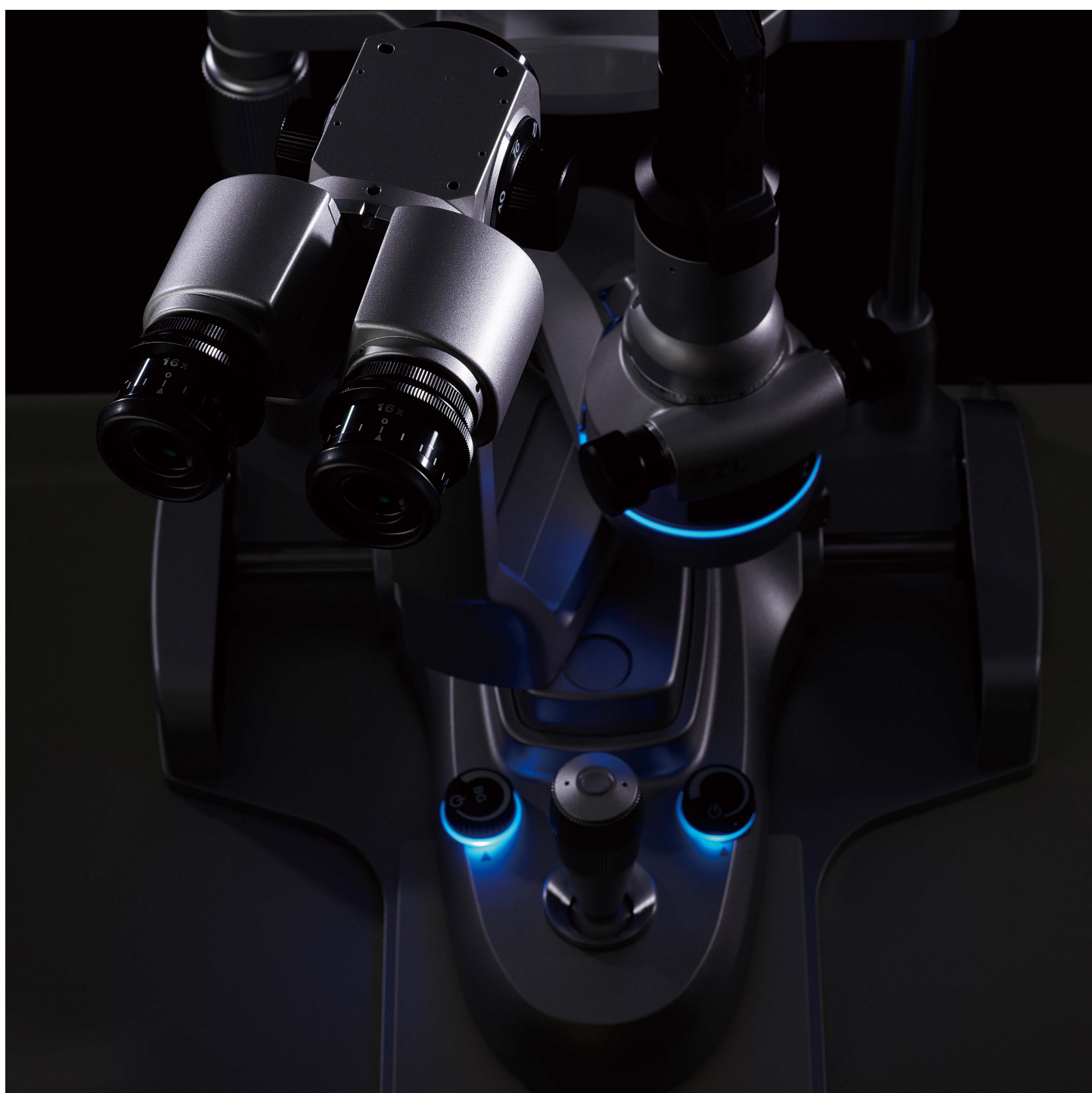


Slit Lamp Microscope

4ZL

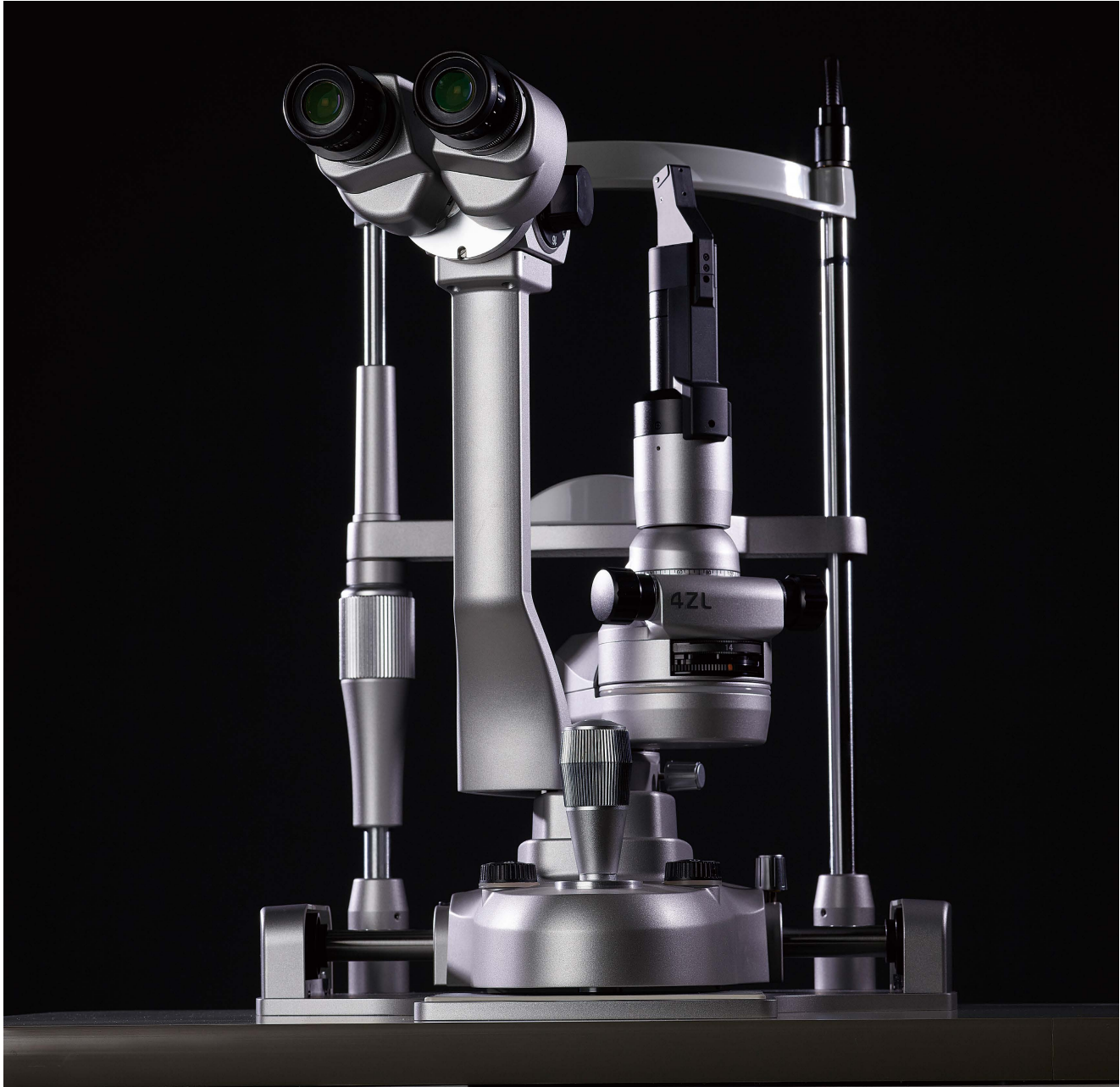
2ZL/2ZLBG

Serving Your Vision



Slit Lamp Microscope 4ZL/2ZL

Slit lamps providing high-level performance and usability, combined with sleek functional beauty.



TAKAGI has been serving the vision of the global eye-care industry since 1955.

TAKAGI brand products are developed, designed and manufactured in Nagano, a region famed for its thriving precision manufacturing industry. Protecting eye health means protecting opportunities to see the beautiful things in the world. It is based on this belief that we take great joy and pride in making our instruments beautiful as well as functional. Our world-class technological capabilities, assured quality and outstanding service, make us trusted by ophthalmic professionals in more than 80 countries worldwide.

TAKAGI's slit lamps feature globally recognised technologies that are essential for high-quality eye care, including outstanding light source characteristics and reliable optics.

The unique design combines both style and usability, offering ease of operation and infection control.

The 2ZL and 4ZL are simple and practical slit lamps ideal for routine examinations.

Designed with both comfort and practicality in mind, it provides high-level performance in a wide range of examinations from cornea to retina. The five-step magnification 4ZL is positioned as the high-end model, with background illumination installed as standard, and the three-step magnification 2ZL provides outstanding cost performance.

Optics

Clear observation of both the anterior and posterior segments of the eye

An inter-optical path distance of 22 mm is used to provide a balanced three-dimensional view of both the anterior and posterior segments of the eye. The binocular tubes are tilted at a stereo angle of 6° convergence, helping to realise easy fusion and stress-free observation.

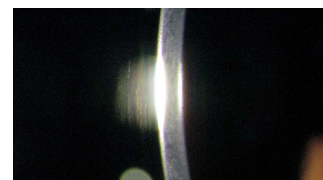
Both the 2ZL and 4ZL provide a wide field of view (2ZL: 23.3 / 14 / 8.8 mm; 4ZL: 35.9 / 23.3 / 14 / 8.8 / 5.5 mm), maximising the volume of information acquired.

Wide range of filters included as standard

The 2ZL and 4ZL come with a wide range of filters included as standard.

The blue correction filter protects patients' eyes from harmful light while leveraging the merits of LEDs. It also has the effect of producing a colour tone similar to that of a halogen lamp, while preventing blue light-induced eye hazard.

The blue filter is effective for fluorescein staining observations and the green (red-free) filter can be used for contrast enhancement, meaning that a diverse range of observations can be easily conducted.



Bright and sharp LED light source

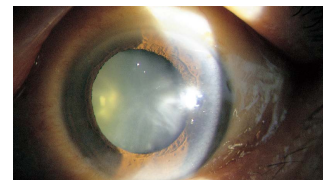
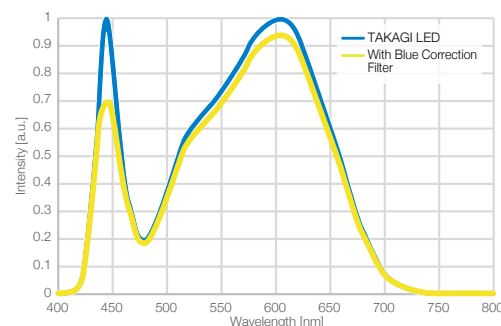


Image with blue correction filter in use

Latest TAKAGI LED technologies

The 2ZL and 4ZL are designed specifically for LED light sources and provide a natural white light similar to that of halogen and sharp slit illumination.

The lamp unit uses a specially designed LED light source, virtually eliminating all concerns about bulb replacement for the lifetime of the product.



Uniform LED light source provides bright and sharp illumination

A single element, high-luminance LED is used to realise a stable and uniform slit illumination by controlling the colour variations inherent in LEDs. The bright and sharp light makes it possible to clearly see the details of hard-to-discern microstructures in the eye.

Design

Functional beauty that realises a safe, clean and comfortable examination environment

Adopting a ground-breaking design that keeps all cables, including power cables, out of sight and unexposed makes it possible to eliminate damage to cables caused by external factors, and so greatly reduces potential causes of failure.

The ST-50 Smart Table, which has no exposed mechanical parts, and the CR-750S Motorised Patient Chair, which can be raised and lowered using buttons on the ST-50, can be used together to enhance convenience and ensure an examination environment that is safe, comfortable and exudes a sense of cleanliness.



Installation example for the ST-50 with a slit lamp from the same series (700GL)

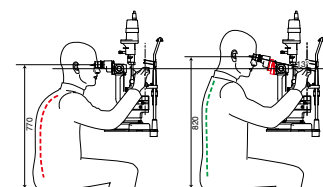
Usability

Comfortable design based on ergonomics

The 2ZL and 4ZL are high-performance slit lamps based on an ergonomic design that aims to optimise the size and placement of various knobs in pursuit of comfortable operability.

Immediately below the slit width adjustment knob is a dial. Using this dial it is possible to rotate the slit illumination and scan left or right, ensuring ease of operation with just your fingertips.

Using the joystick enables one-handed control with a lightness and smoothness of movement that does not place a burden on the wrists, fingers or arms. Using the optional 13° inclined adapter or tiltable binocular tubes helps to enhance neck and shoulder comfort and realise a comfortable sitting posture when using the slit lamp. The headrest can be easily adjusted up and down, and the forehead rest features a finger rest, making examinations easier.



Without 13° inclined adapter With 13° inclined adapter

Imaging and informed consent

A background illumination device that brightens the background is included as standard on the 4ZL and 2ZL BG, making it easy to capture observation images.

The same LED as the main light source is also used for background illumination, which keeps the colour balance even and is also highly effective in visualising observation findings.

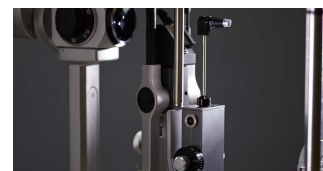
If you require a background illumination device, please order either the 2ZL BG or the 4ZL.



Practical options

For IOP measurement the R-type applanation tonometer AT-1 or the Z-type applanation tonometer AT-2 can be used. (Please select a tonometer base to match your tonometer of choice.)

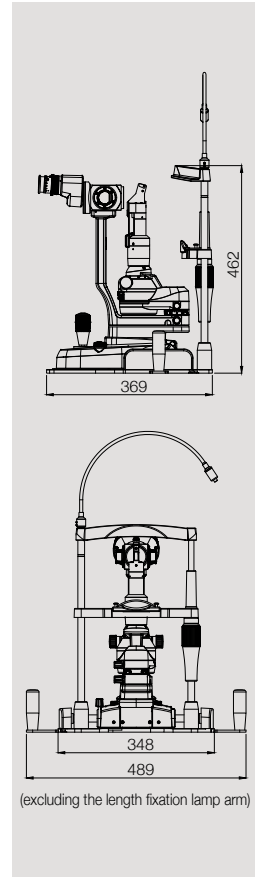
Please use together with the S12-18 a reusable measuring prism that is environmentally friendly and economical.



Specifications

| Model name | | 2ZL Slit Lamp Microscope | 4ZL Slit Lamp Microscope |
|--|--------------------------------|--|--|
| | | Standard BG | |
| Microscope | Type | Galilean binocular stereo microscope | Galilean binocular stereo microscope |
| | Magnification changer | 3 position rotating drum | 5 position rotating drum |
| | Eyeiece | 16x widefield, high-eyepoint | 16x widefield, high-eyepoint |
| | Total magnifications | 10x, 16x, 25x | 6.3x, 10x, 16x, 25x, 40x |
| | Field of view (diameter) | 23.3, 14, 8.8 mm | 35.9, 23.3, 14, 8.8, 5 mm |
| | Stereo angle | 10° | 10° |
| | Interpupillary distance | 52-82 mm | 52-82 mm |
| | Eyeiece diopter range | ± 7 D | ± 7 D |
| | Working distance | 119 mm (from objective lens to patient's eye) | 119 mm (from objective lens to patient's eye) |
| | Focal length | 125 mm (Objective lens) | 125 mm (Objective lens) |
| Illumination Unit | Slit image width | Continuously variable 0-14 mm (almost circular at 14 mm) | Continuously variable 0-14 mm (almost circular at 14 mm) |
| | Slit image length | Continuously variable 1-14 mm | Continuously variable 1-14 mm |
| | Slit image rotation | Continuously variable 0-180° with click stop at 90° | Continuously variable 0-180° with click stop at 90° |
| | Slit decentration (horizontal) | Possible (fixable at 0°) | Possible (fixable at 0°) |
| | Illumination field diameter | 14, 8, 5, 3, 0.3 mm | 14, 8, 5, 3, 0.3 mm |
| | scanning (decentration) angle | 7° to the left, 7° to the right | 7° to the left, 7° to the right |
| | Filters | Blue / Green (red-free) / Blue correction | Blue / Green (red-free) / Blue correction |
| | Light source | LED(3500K) | LED (3500K) |
| Base Unit | Base unit operation | Single-handed joystick operation for forward-backward, left-right, up-down movement. | Single-handed joystick operation for forward-backward, left-right, up-down movement. |
| | Movement range | 105 mm (forward-backward, left-right), 30 mm (up-down) | 105 mm (forward-backward, left-right), 30 mm (up-down) |
| | Fine movement range | 15 mm (forward-backward, left-right) | 15 mm (forward-backward, left-right) |
| Headrest Unit | Vertical movement range | 95 mm | 95 mm |
| | Fixation light | LED (red) | LED (red) |
| Power Unit | Power supply | AC 100-240 V (±10%), 0.4-0.2 A | AC 100-240 V (±10%), 0.4-0.2 A |
| | Power input | DC 5 V 2 A | DC 5 V 2 A |
| Weight (excl. power adapter & options) | | 11 kg | 11.5 kg |

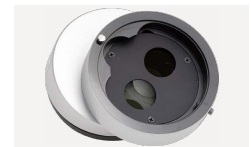
Dimensions



Breath shield (H290 mm x W 220 mm) as standard



AT-1 Applanation tonometer

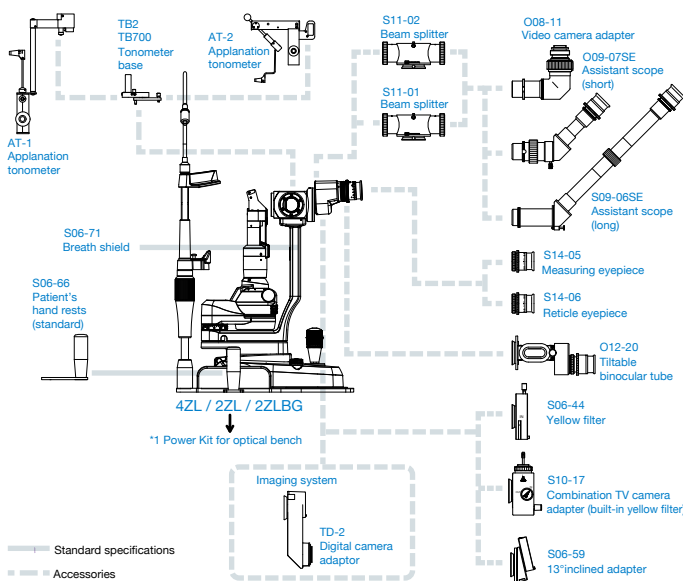


S06-59 13° inclined adaptor



S10-17 Combination TV camera adaptor (built-in yellow filter)

System Chart



*1 Please contact our Sales Department for details about the power kit.

Accessories

| Model number | Detailed information |
|--------------|--|
| AT-1 | Applanation tonometer R-type (requires a tonometer base for installation) |
| AT-2 | Applanation tonometer Z-type (requires a tonometer base for installation) |
| O08-11 | Adapter to connect TV or video camera F = 50 mm |
| O12-20 | Binocular tube to change the angle of the eyepiece tube for enhanced neck/shoulder comfort. |
| S06-44 | Yellow filter to enhance contrast for fluorescence observation |
| S06-59 | 13° inclined adaptor to enhance neck/shoulder comfort |
| S06-66 | Patient handrests so patient can grasp and comfortably maintain their posture during examinations (included as standard, available to purchase separately) |
| S06-71 | Breath shield (included as standard, available to purchase separately) |
| S09-06SE | Long monocular microscope for assistant |
| S09-07SE | Short monocular microscope for assistant |
| S10-17 | Adapter fitted with beam splitter, camera adapter and yellow filter function |
| S11-01 | Beam splitter to attach a camera or assistant microscope (spectroscopic ratio 40: 60) |
| S11-02 | Beam splitter to attach a camera or assistant microscope (spectroscopic ratio 30: 70) |
| S14-05 | Eyepiece with scale for measuring |
| S14-06 | Eyepiece with reticle (crosshair) |
| TB2 | Tonometer base for AT-2 |
| TB700 | Tonometer base for AT-1 |
| TD-2 | Adapter for attaching digital Canon SLR camera |

To ensure safe and correct handling please read the user manual before using.

- Description and appearance as detailed in this brochure may be subject to change as improvements are made to products.
- Colours as they appear in brochure photographs may be slightly different to actual products due to lighting conditions when photographs were taken, or print colours.



For The Americas, Asia-Pacific & Middle East
Takagi Seiko Co., Ltd
 330-2 Iwafune, Nakano-shi, Nagano-ken, 383-8585, Japan
 TEL : +81(0)269-22-4511(Switchboard) URL : <https://www.takagi-j.com>



Your local distributor



For Europe & Africa
Takagi Ophthalmic Instruments Europe Ltd
 Citylabs 1.0, Nelson Street, Manchester, M13 9NQ, UK
 TEL : +44 (0)161 273 6330 URL : <https://www.takagieurope.com>